

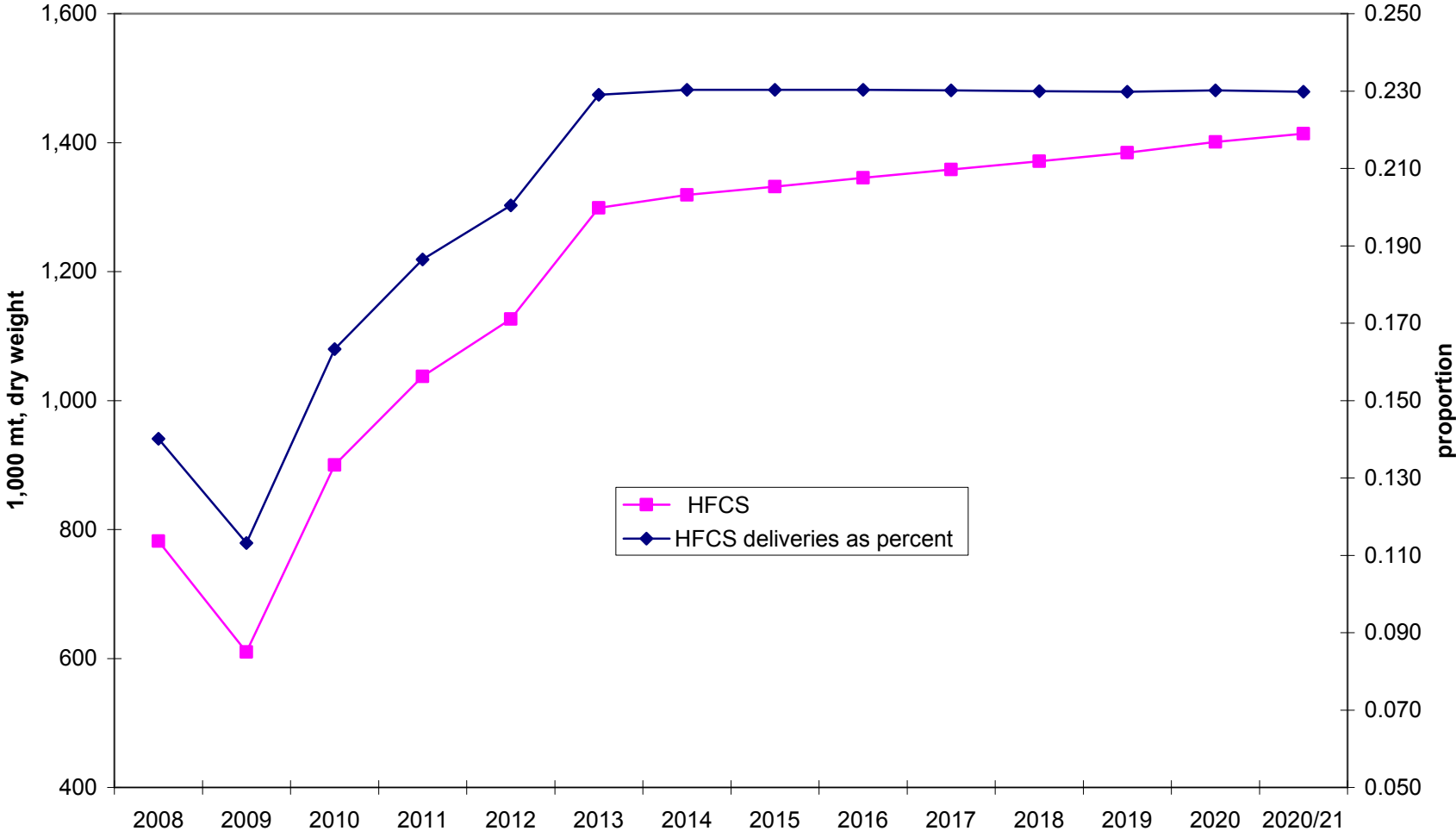
# High Fructose Corn Syrup and the NAFTA

-- short and long term effects

Steve Haley

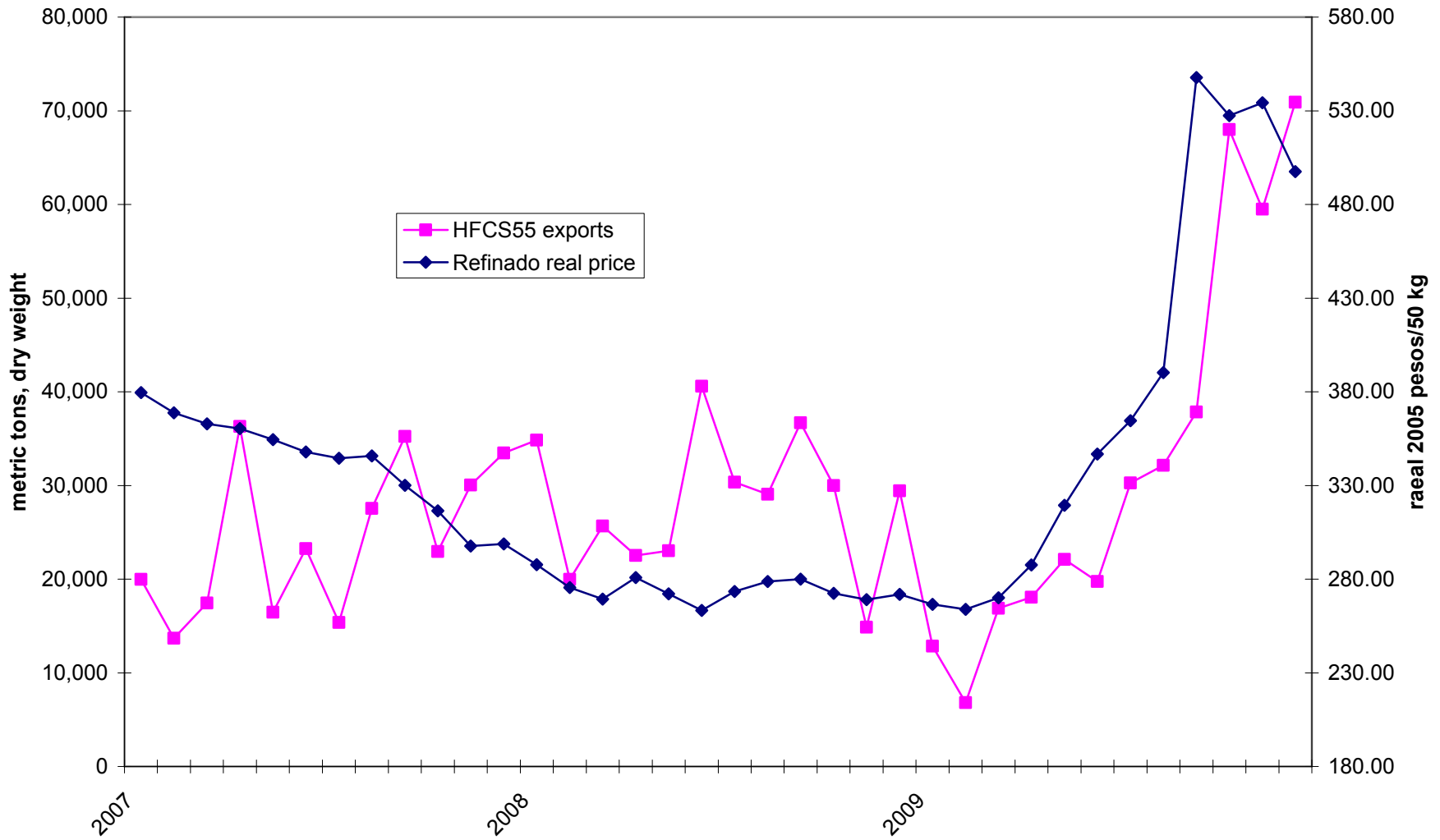
[www.ers.usda.gov/briefing/sugar](http://www.ers.usda.gov/briefing/sugar)

Figure - Project HFCS deliveries in Mexico, total and as percent of sweetener consumption



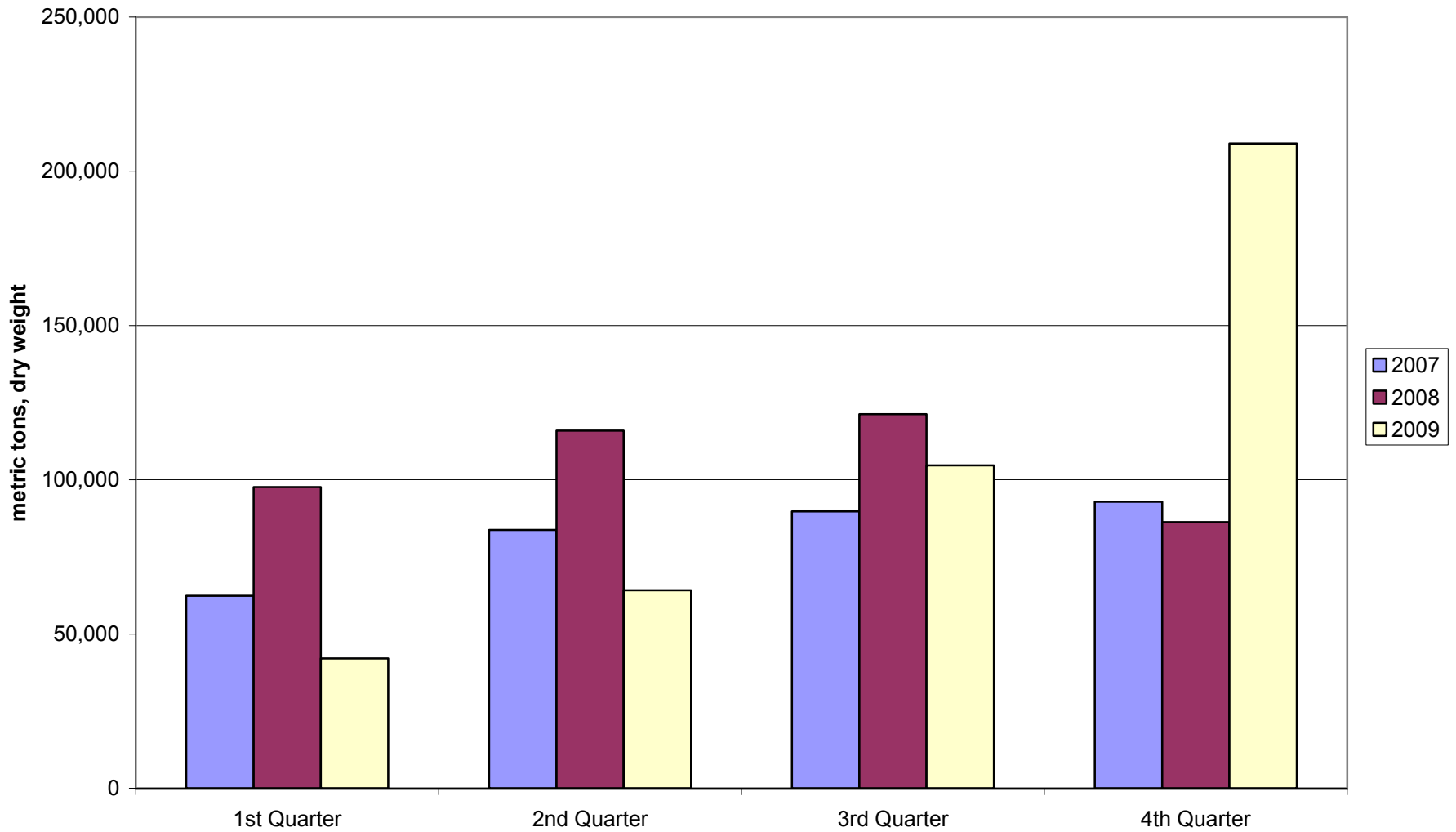
Source: USDA, ERS. Sugar and Sweetener Group.

Figure -- U.S. HFCS55 exports to Mexico



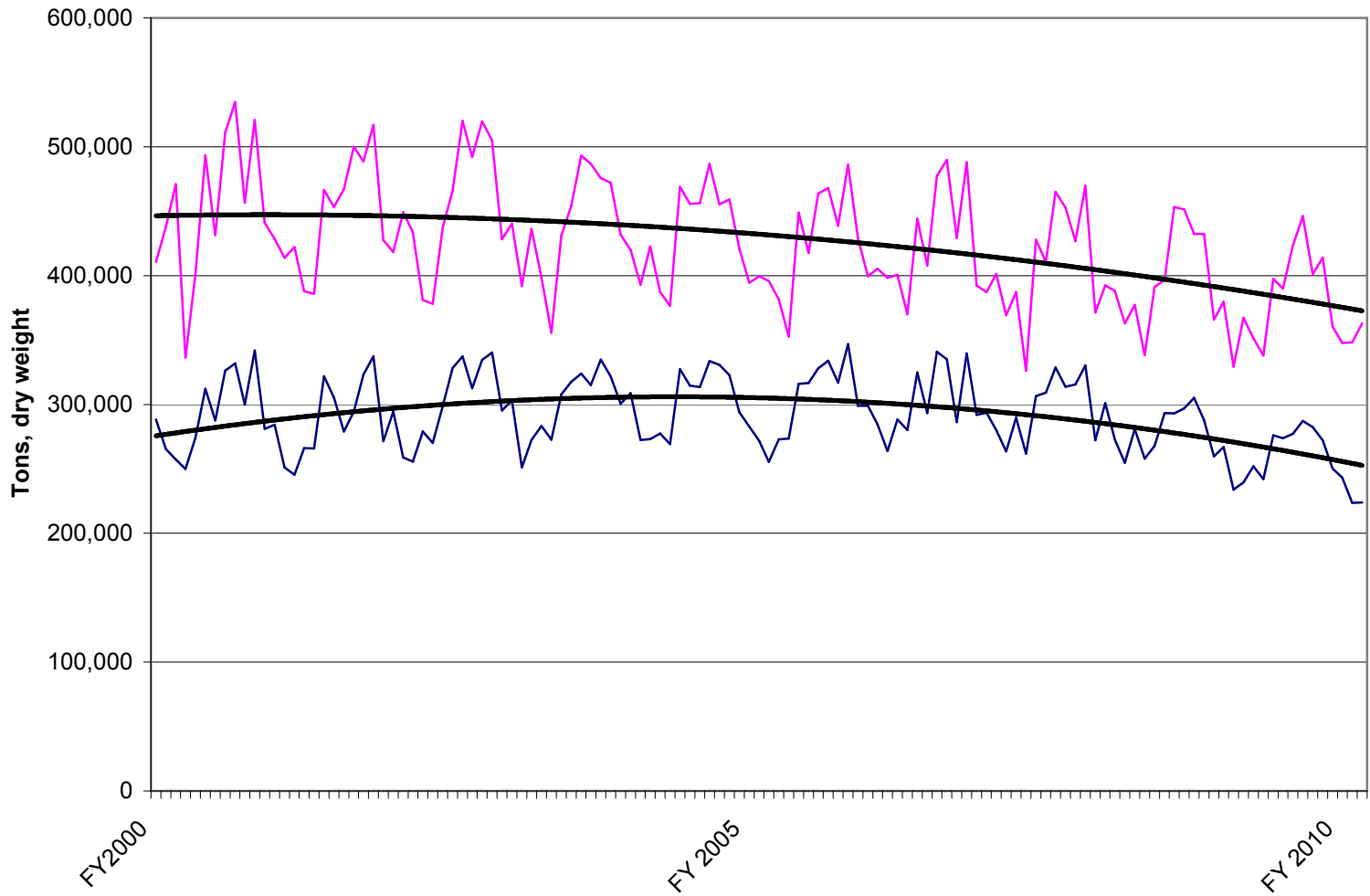
Source: U.S. Census, SNICC.

Figure -- U.S. HFCS55 exports to Mexico, by quarter, 2007-09.



Source: U.S. Census Bureau.

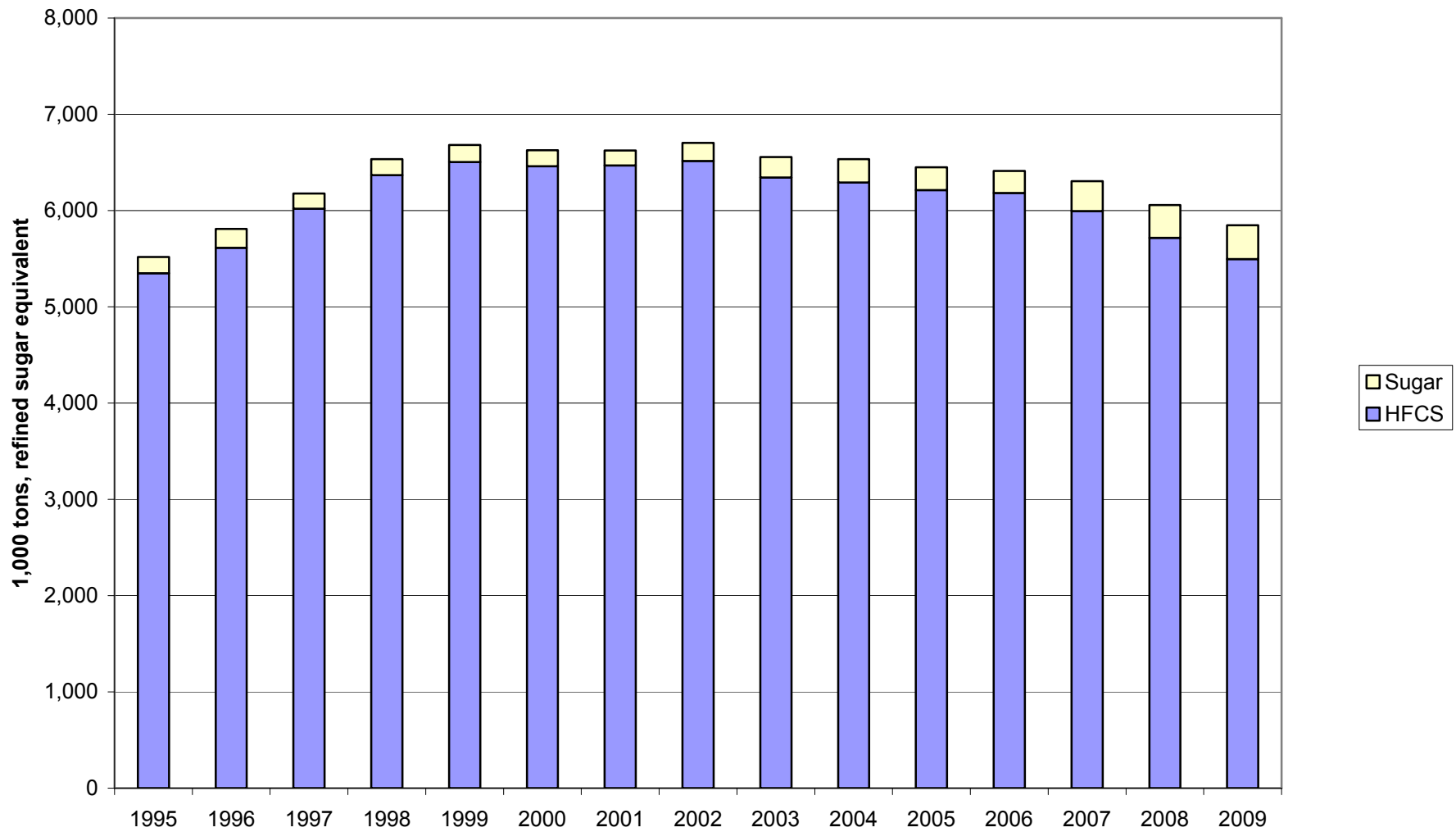
Figure -- HFCS deliveries, actual and trend, monthly, FY 2000-10



Source: ERS.

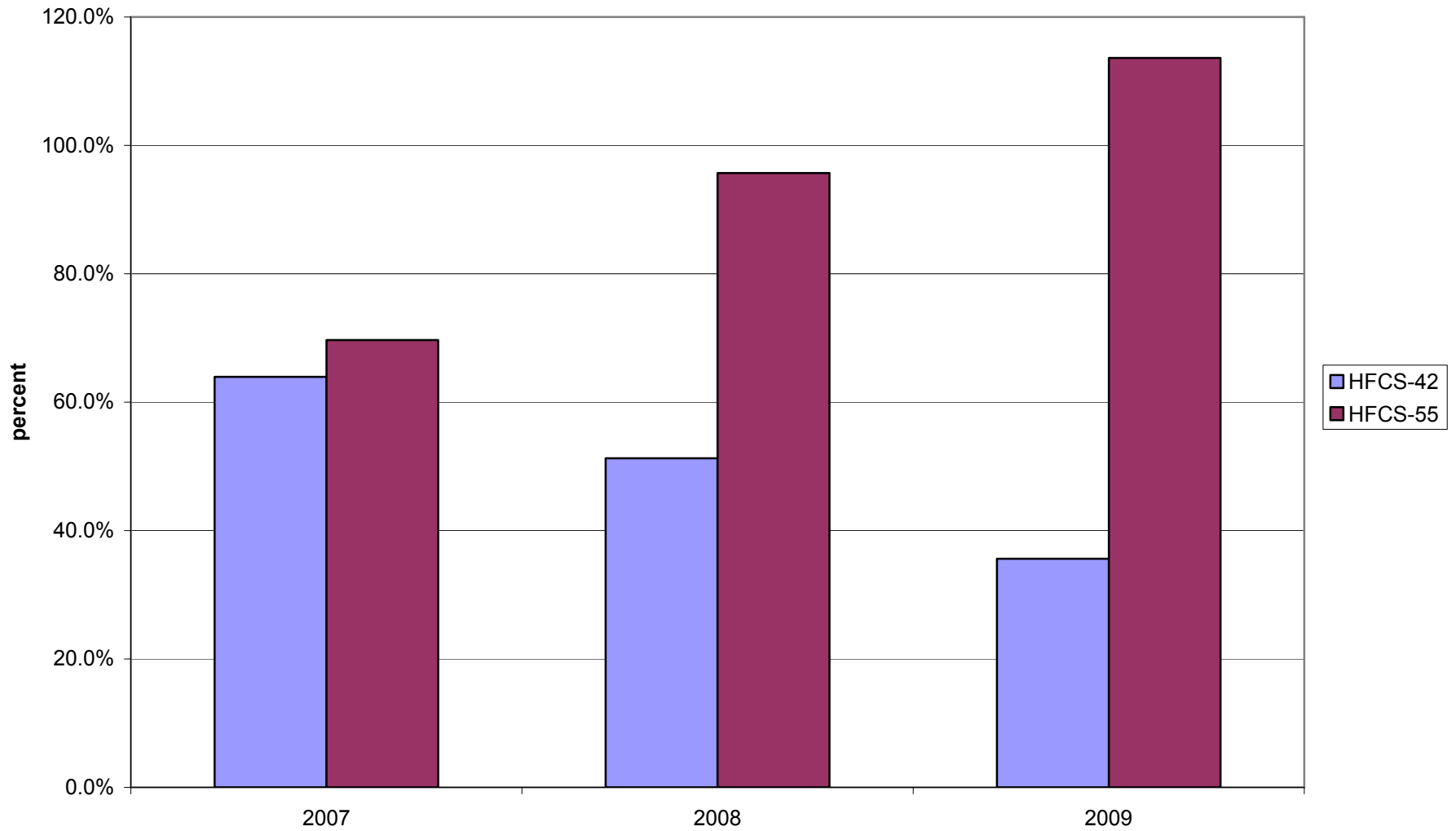
— HFCS42 — HFCS55 — Poly. (HFCS42) — Poly. (HFCS55)

**Figure -- Beverage demand for sweeteners**



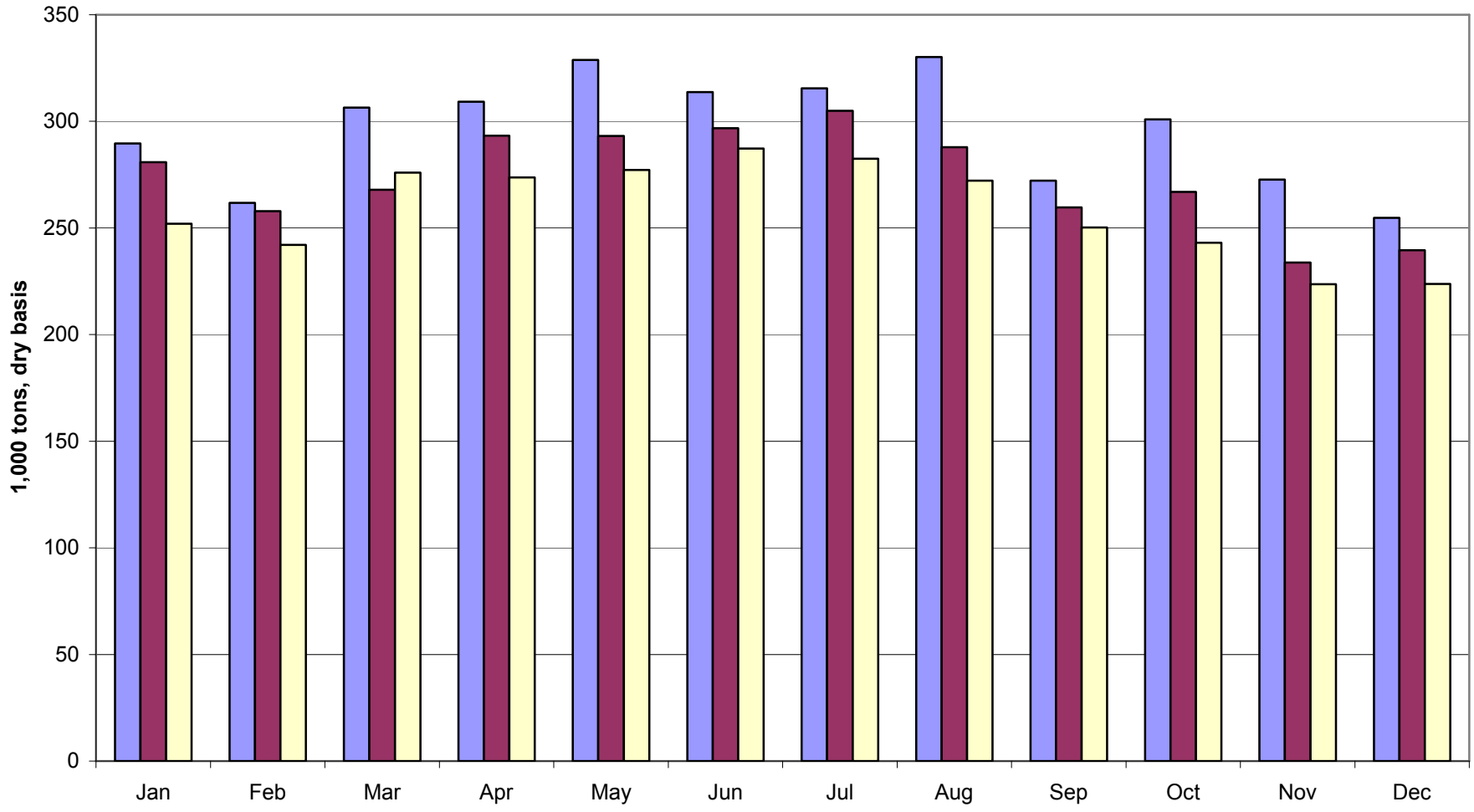
Source: USDA, ERS, estimates by Sugar and Sweetener Group.

**Figure -- Percent loss attributable to reduced beverage end user demand**



Source: USDA, ERS, Sugar and Sweetener Group.

Figure -- Domestic deliveries of HFCS42, monthly, 2007-09.



Source: ERS.

2007 2008 2009

Figure -- Domestic deliveries of HFCS55, monthly, 2007-09.

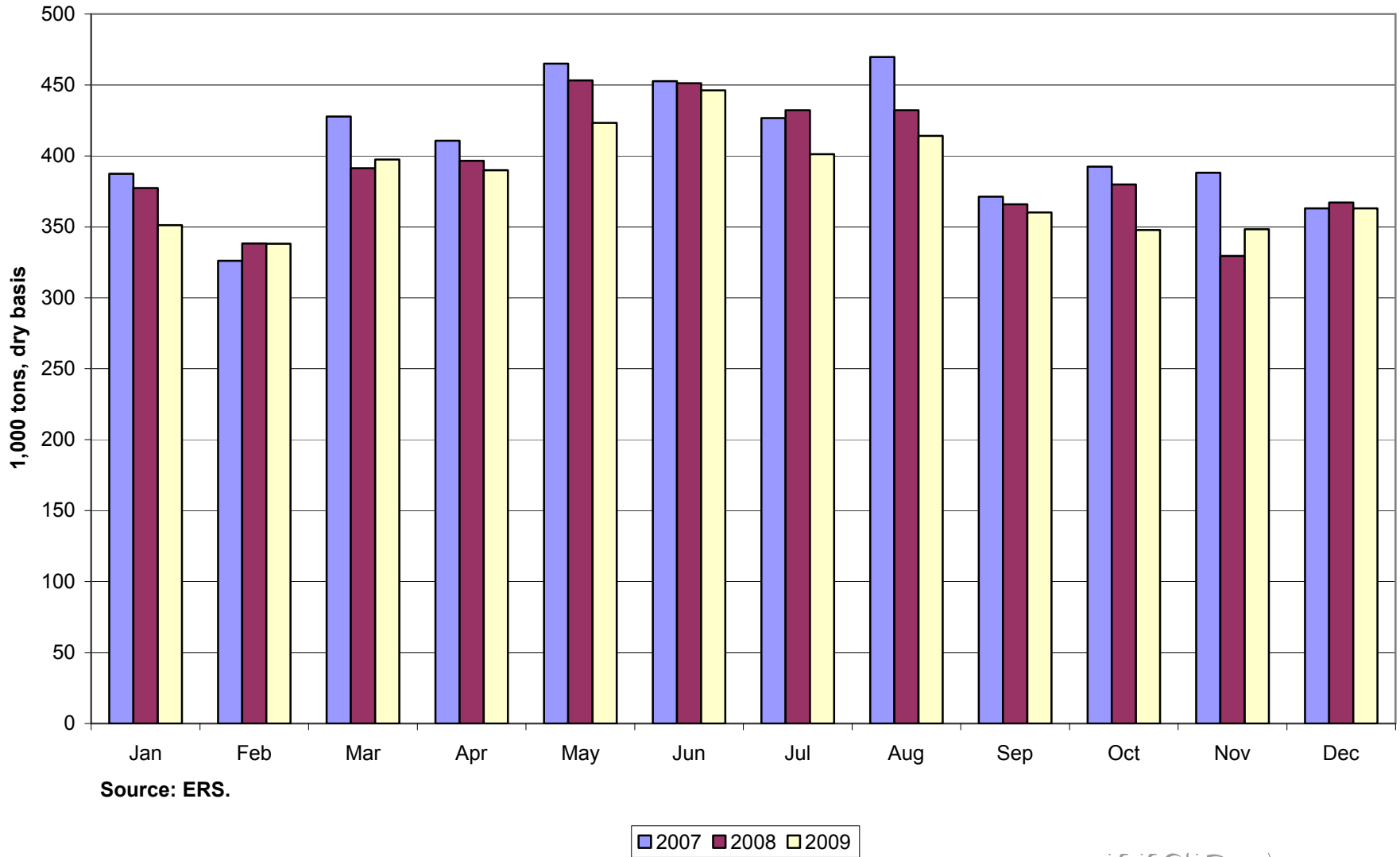
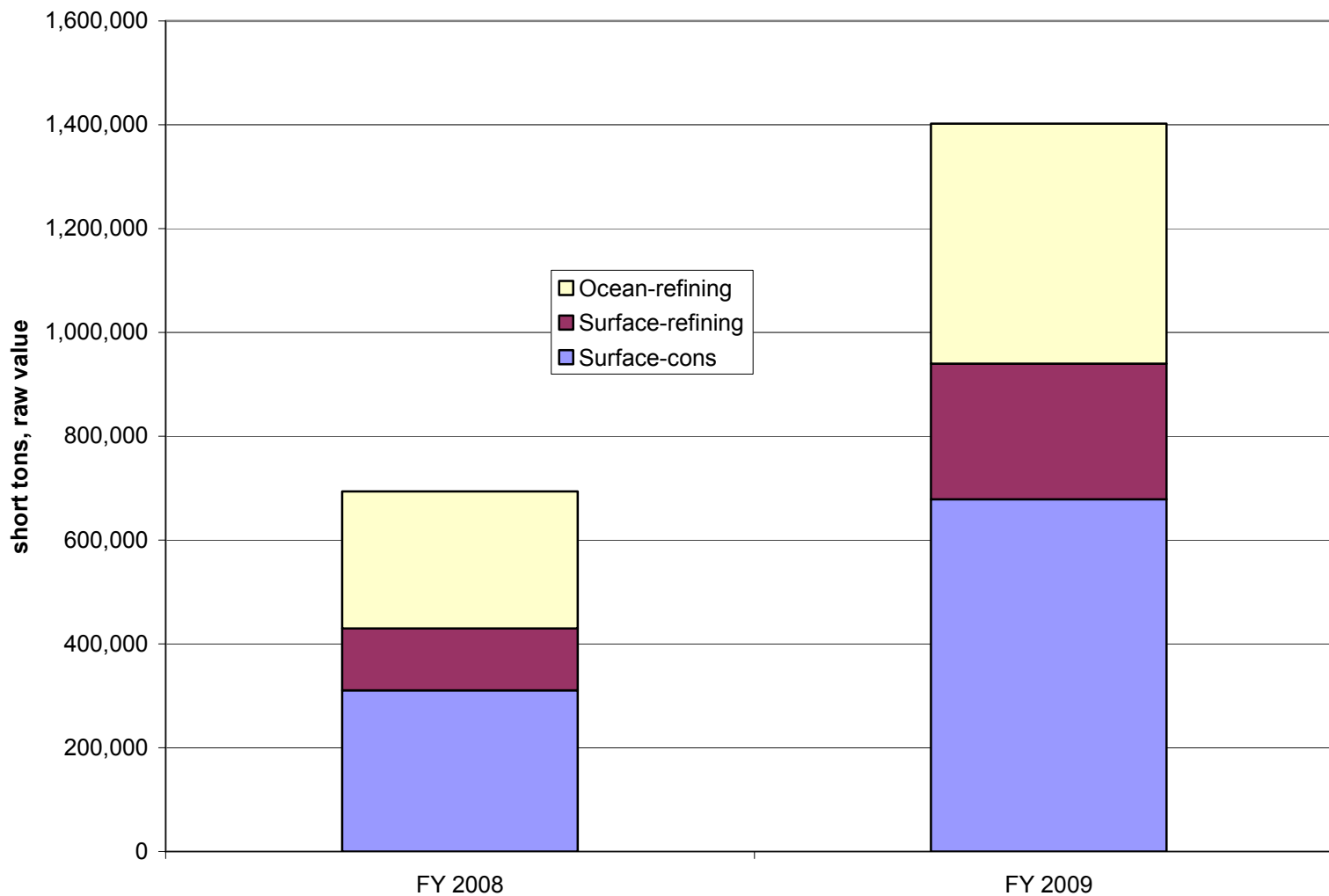
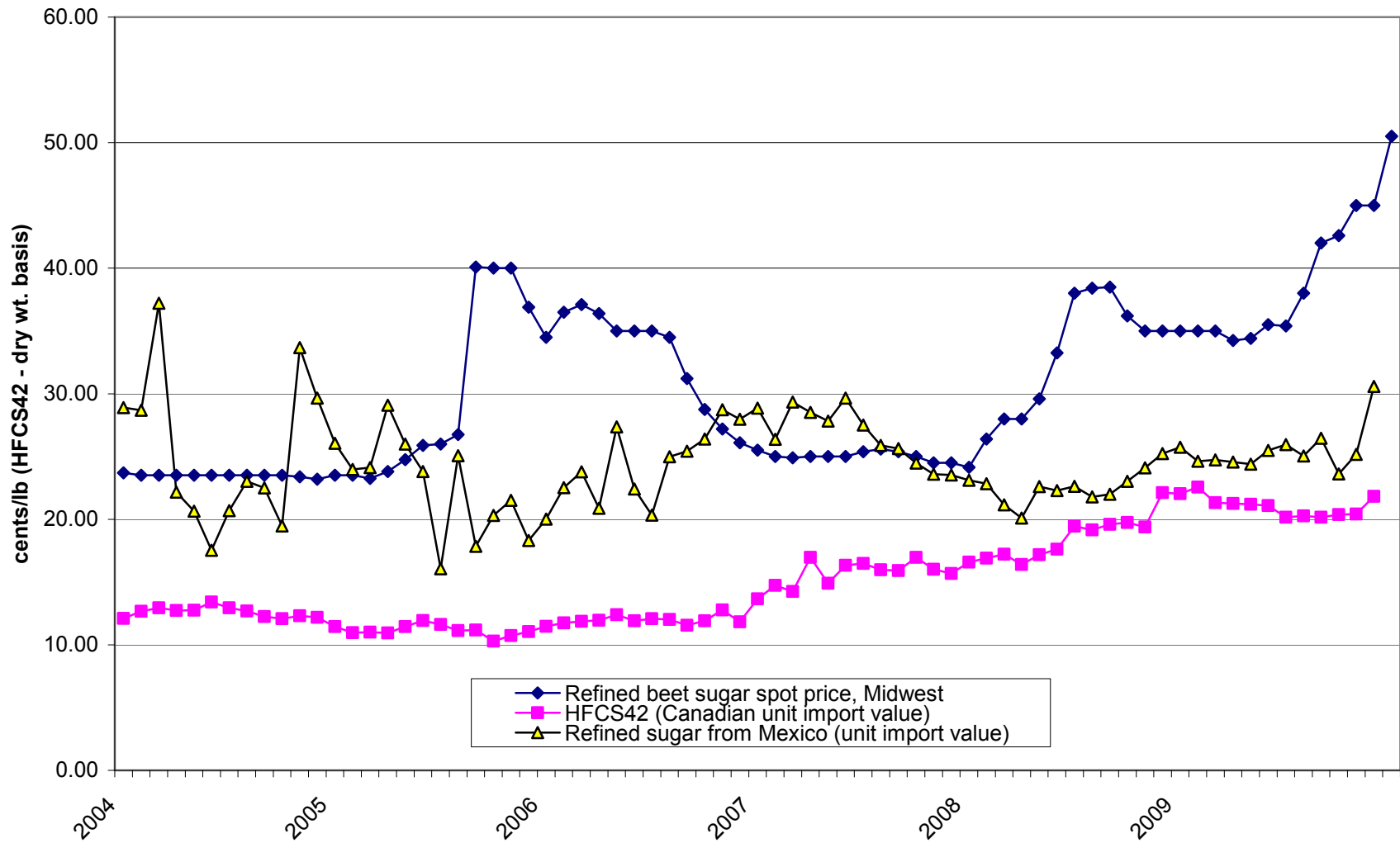


Figure -- Sugar imports from Mexico, by entry mode and use destination

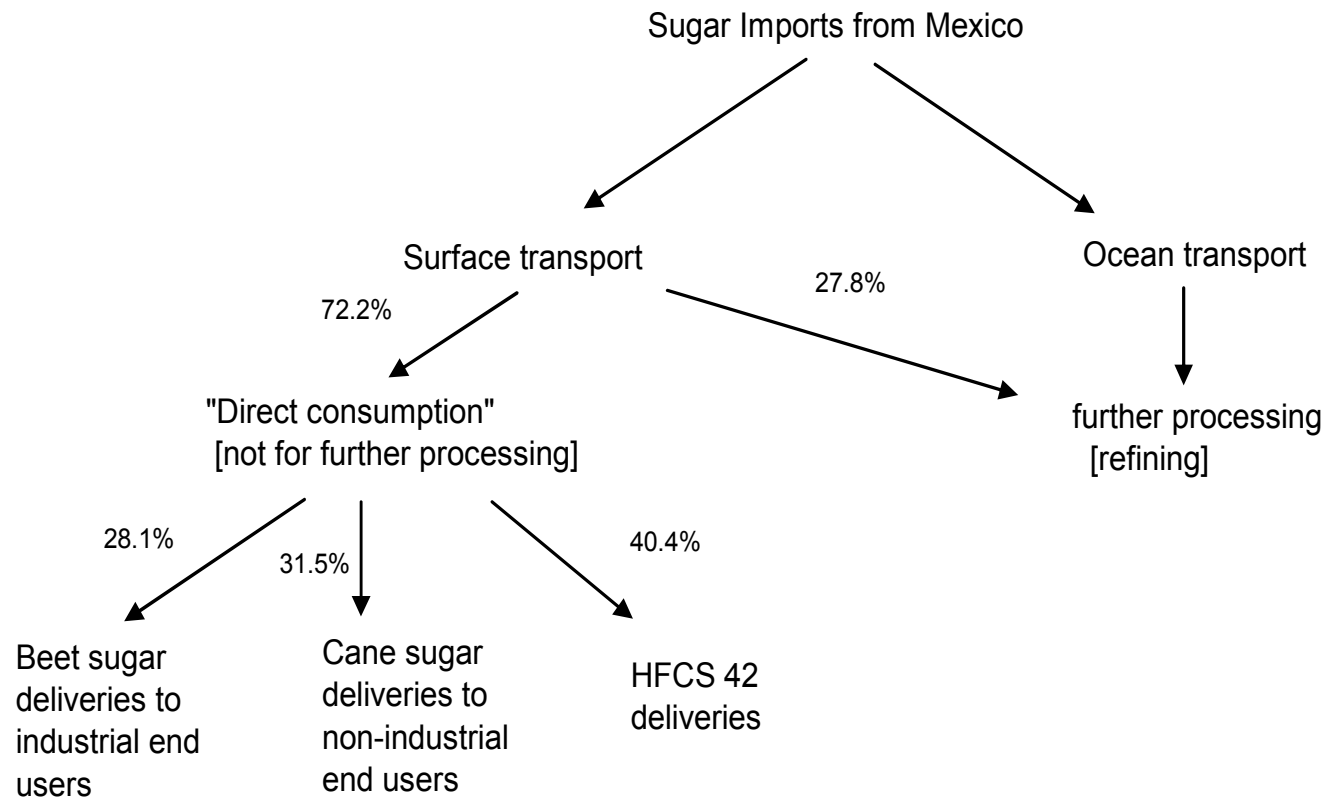


Source: USDA, FAS; USDA, ERS; U.S. Customs Service.

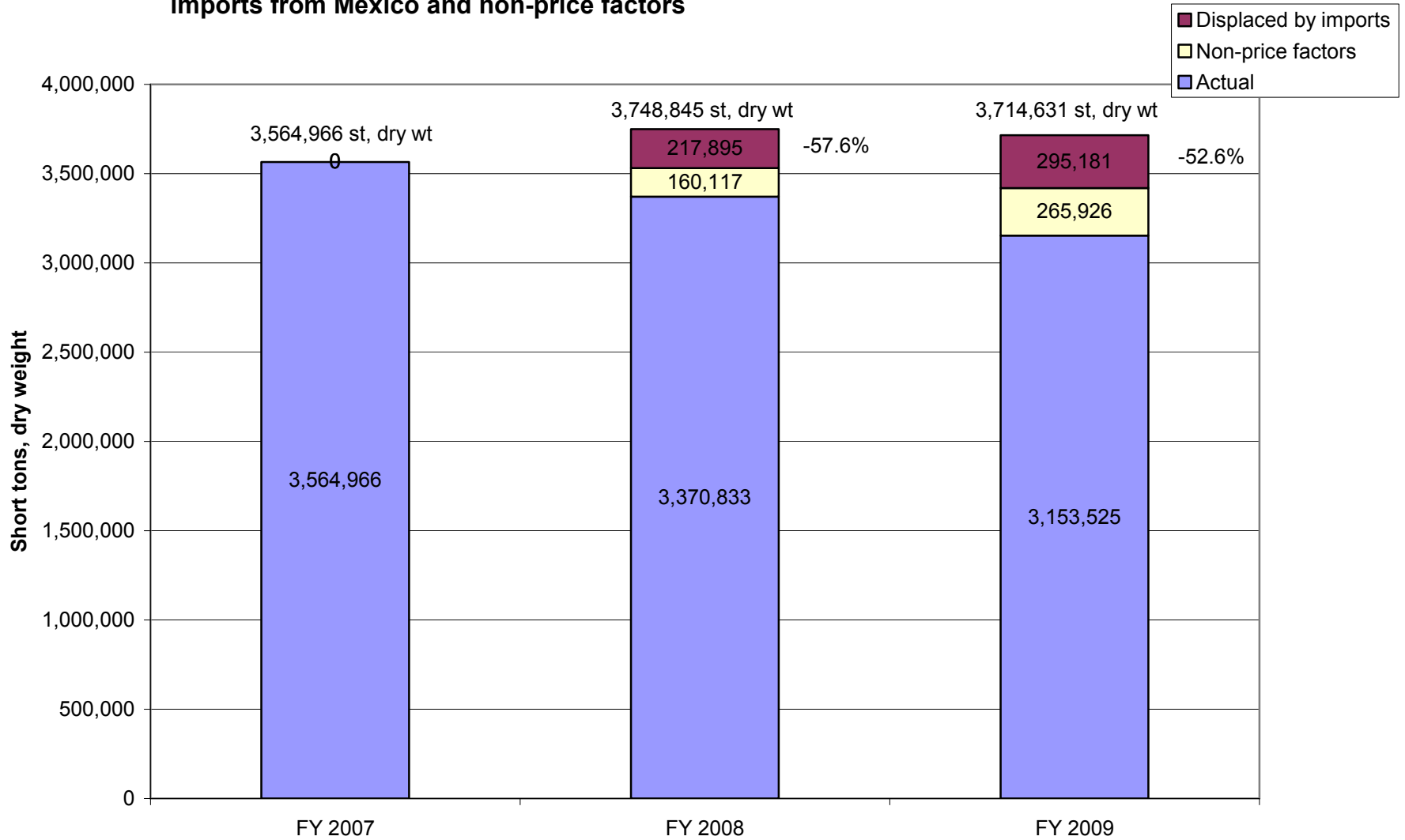
**Figure -- Monthly refined sugar and HFCS42 pricing, 2004-2009**



Source: Milling and Baking News, U.S. Census Bureau.

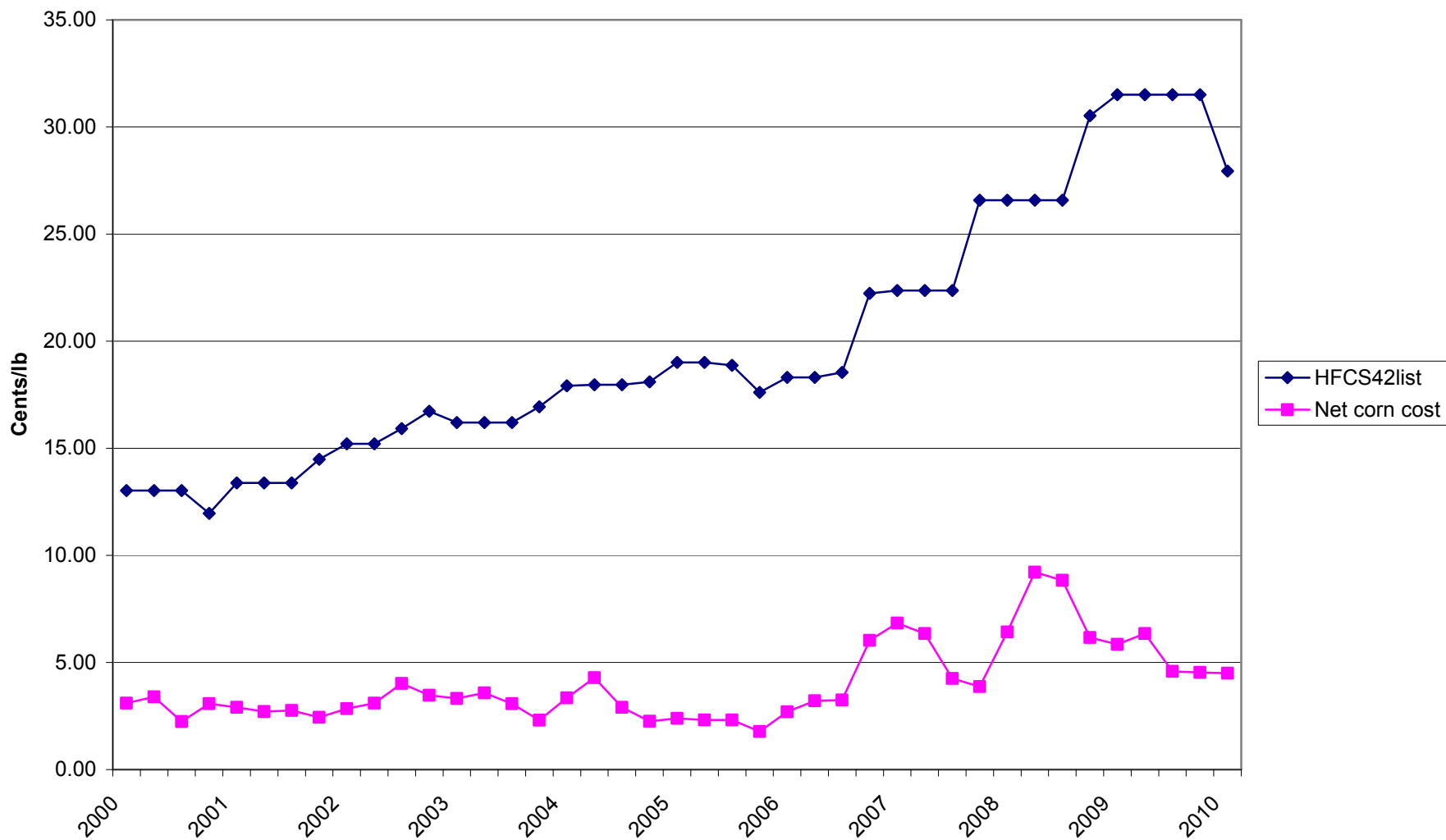


**Figure -- HFCS 42 deliveries, actual and estimated displacement by direct consumption imports from Mexico and non-price factors**



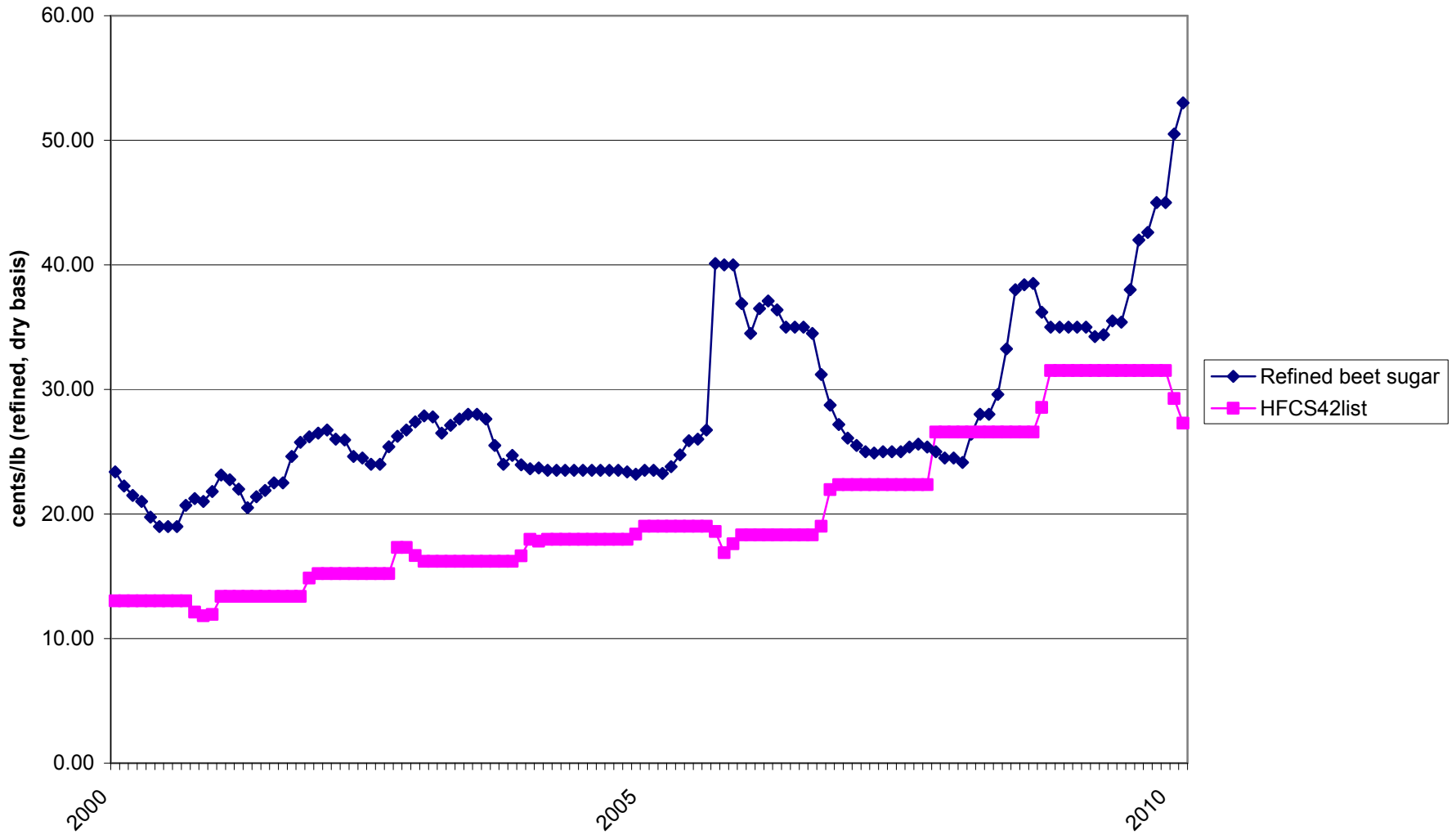
Source: USDA, ERS, Sugar and Sweetener Group.

Figure -- HFCS42 list price and net corn cost of production



Source: Milling and Baking News; USDA, ERS.

Figure -- U.S. sweetener prices, refined beet sugar and HFCS42, 2000-10.



Source: Milling and Baking News.